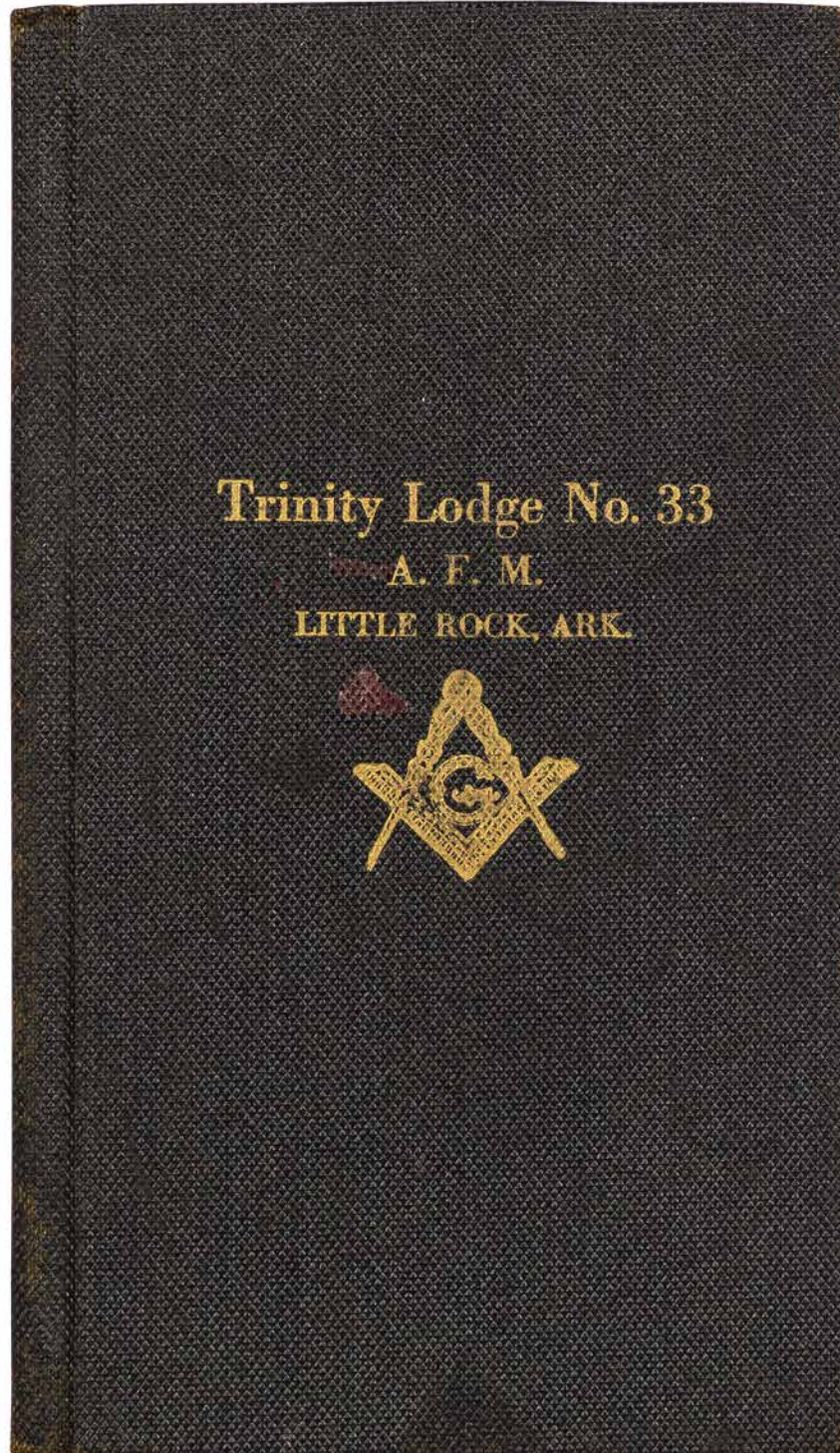


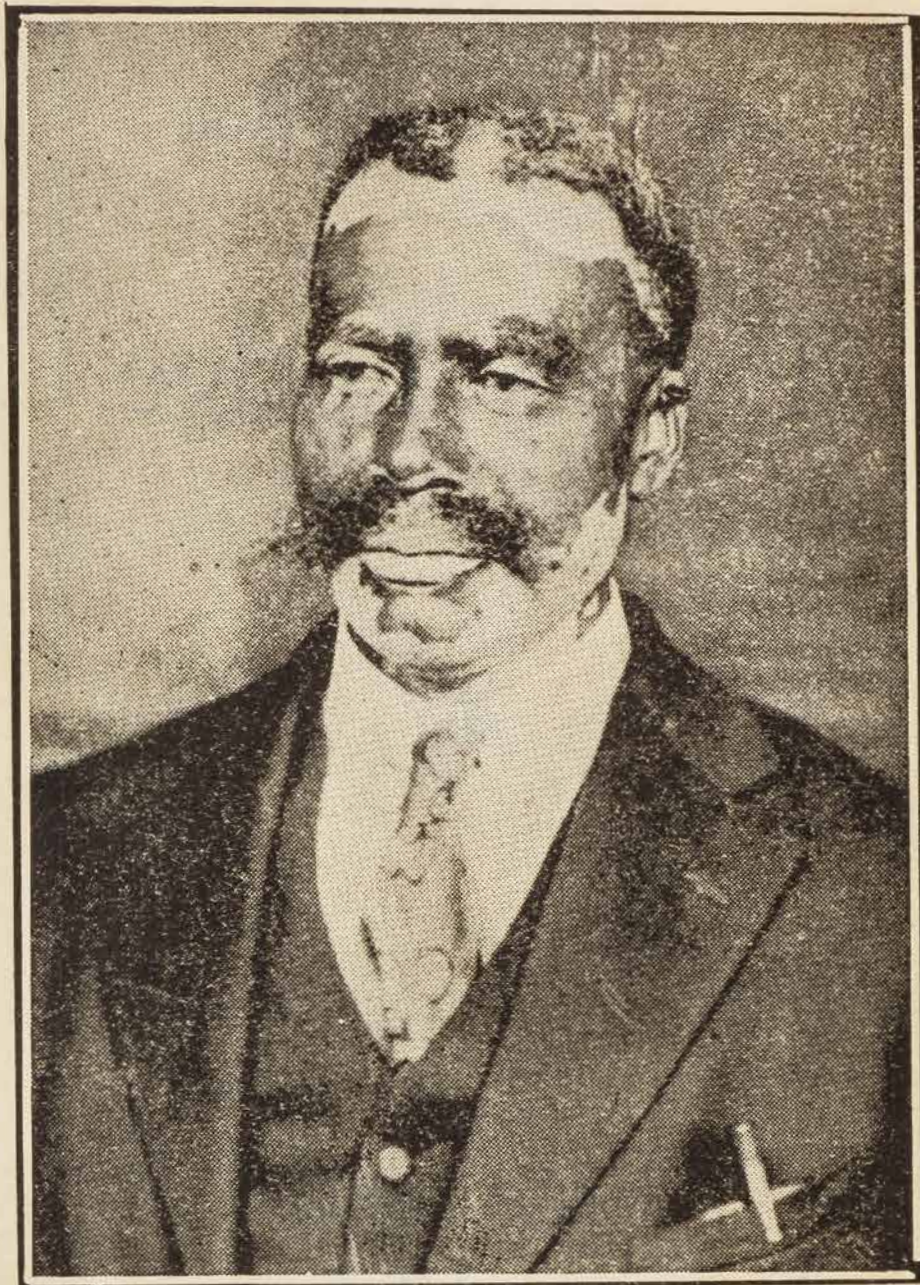
[Freemasonry]: Financial Card, By-Laws, and Membership Roll, Trinity Lodge, Number 33, Free and Accepted Masons of Arkansas

Little Rock, Arkansas: The Lodge [circa 1940]

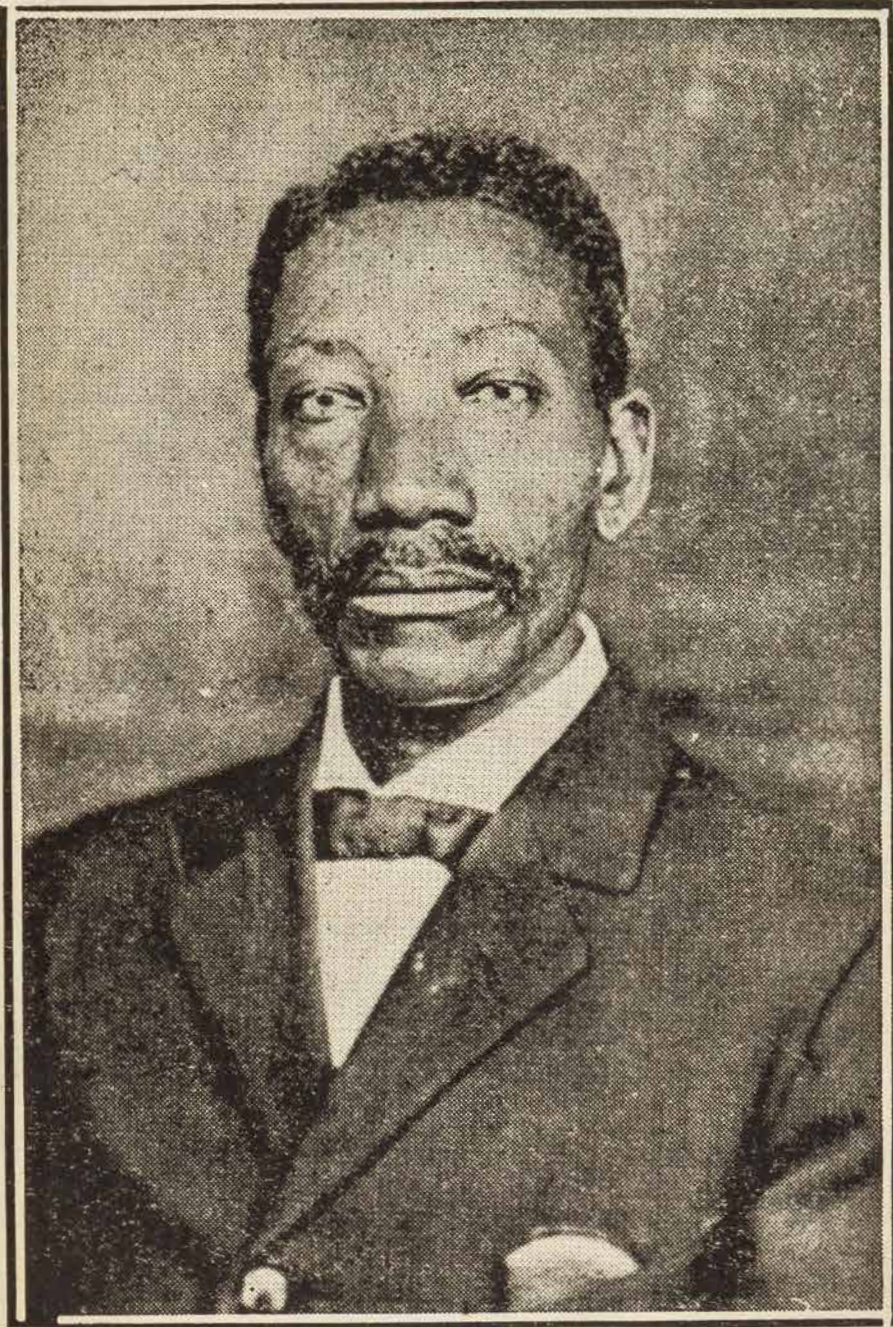
\$700



16mo. 29pp. Frontispiece portraits of two officers, J. R. Kennedy and E. A. Stevenson. Original gilt stamped black cloth. Near fine. Includes Charter, By-Laws, and a Roster of 92 members. This copy belonged to member M. B. Jeffries and includes a manuscript accounting of his dues payments, covering five pages and five years (1944-1948). *OCLC* locates no copies. [\[BTC#426122\]](#)



J. H. KENNEDY, W. M.



E. A. STEVENSON, SECRETARY

19 44

Amt. of Ins. \$ _____

Bro. W. B. Jeffries

			DATE
JAN.			
Dues	\$ 25	<i>W. B. Jeffries</i>	Sec. 6/7/44
M.B.A.	\$ 125	O. A. KERN, W. M.	W.M. 1-13-44
FEB.			
Dues	\$ 25		Sec. 6/7/44
MAR.			
Dues	\$ 25		Sec. 6/7/44
APR.			
Dues	\$ 25		Sec. 6/7/44
M.B.A.	\$ 120	O. A. KERN, W. M.	W.M. 4-1-44
MAY			
Dues	\$ 25	<i>W. B. Jeffries</i>	Sec. 4/5/44
JUNE			
Dues	\$ 25	<i>W. B. Jeffries</i>	Sec. 4/5/44
JULY			
Dues	\$ 25	<i>W. B. Jeffries</i>	Sec. 5/5/44
M.B.A.	\$ 125	O. A. KERN, W. M.	W.M. 7-19-44
Grand Tax	\$		W.M.
Charity Tax	\$		W.M.
AUG.			
Dues	\$ 25	<i>W. B. Jeffries</i>	Sec. 4/5/44
SEPT.			
Dues	\$ 25	<i>W. B. Jeffries</i>	Sec. 5/7/45
OCT.			
Dues	\$ 25	<i>W. B. Jeffries</i>	Sec.
M.B.A.	\$ 125	O. A. KERN, W. M.	W.M. 11/1/44
Burial Tax	\$		W.M.
NOV.			
Dues	\$ 25	<i>W. B. Jeffries</i>	Sec. 3/7/44
DEC.			
Dues	\$ 25	<i>W. B. Jeffries</i>	Sec.

ALWAYS BRING YOUR PASS BOOK WHEN PAYING ASSESSMENTS OR DUES

19 45 Amt. of Ins. \$ _____

Bro. M.B. Jeffries

			DATE
JAN. Dues	\$ 25	<i>C. S. Kern</i>	Sec. 3/7/45
M.B.A.	\$ 125	C. S. KERN, W. M.	3-7-44
FEB. Dues	\$ 25	<i>C. S. Kern</i>	Sec. 3/7/45
MAR. Dues	\$ 25		Sec.
APR. Dues	\$		Sec.
M.B.A.	\$ 125	<i>C. S. Kern</i>	W.M. 5-2-45
MAY Dues	\$ 25	<i>bits acting</i>	Sec. 8-1-45
JUNE Dues	\$ 25		Sec. 8-1-45
JULY Dues	\$ 25	<i>bits acting</i>	Sec. 8-1-45
M.B.A.	\$ 125	<i>C. S. Kern</i>	W.M. 8-1-45
Grand Tax	\$		W.M.
Charity Tax	\$		W.M.
AUG. Dues	\$ 25	<i>C. S. Kern</i>	Sec. 8/3/45
SEPT. Dues	\$ 25	<i>C. S. Kern</i>	Sec. 8/3/45
OCT. Dues	\$ 25	<i>C. S. Kern</i>	Sec. 2/6/46
M.B.A. Burial Tax	\$ 125	<i>C. S. Kern</i>	W.M. 10/3-45
NOV. Dues	\$ 25	<i>C. S. Kern</i>	Sec. 2/6/46
DEC. Dues	\$ 25	<i>C. S. Kern</i>	Sec. 2/6/46

ALWAYS BRING YOUR PASS BOOK WHEN PAYING ASSESSMENTS OR DUES