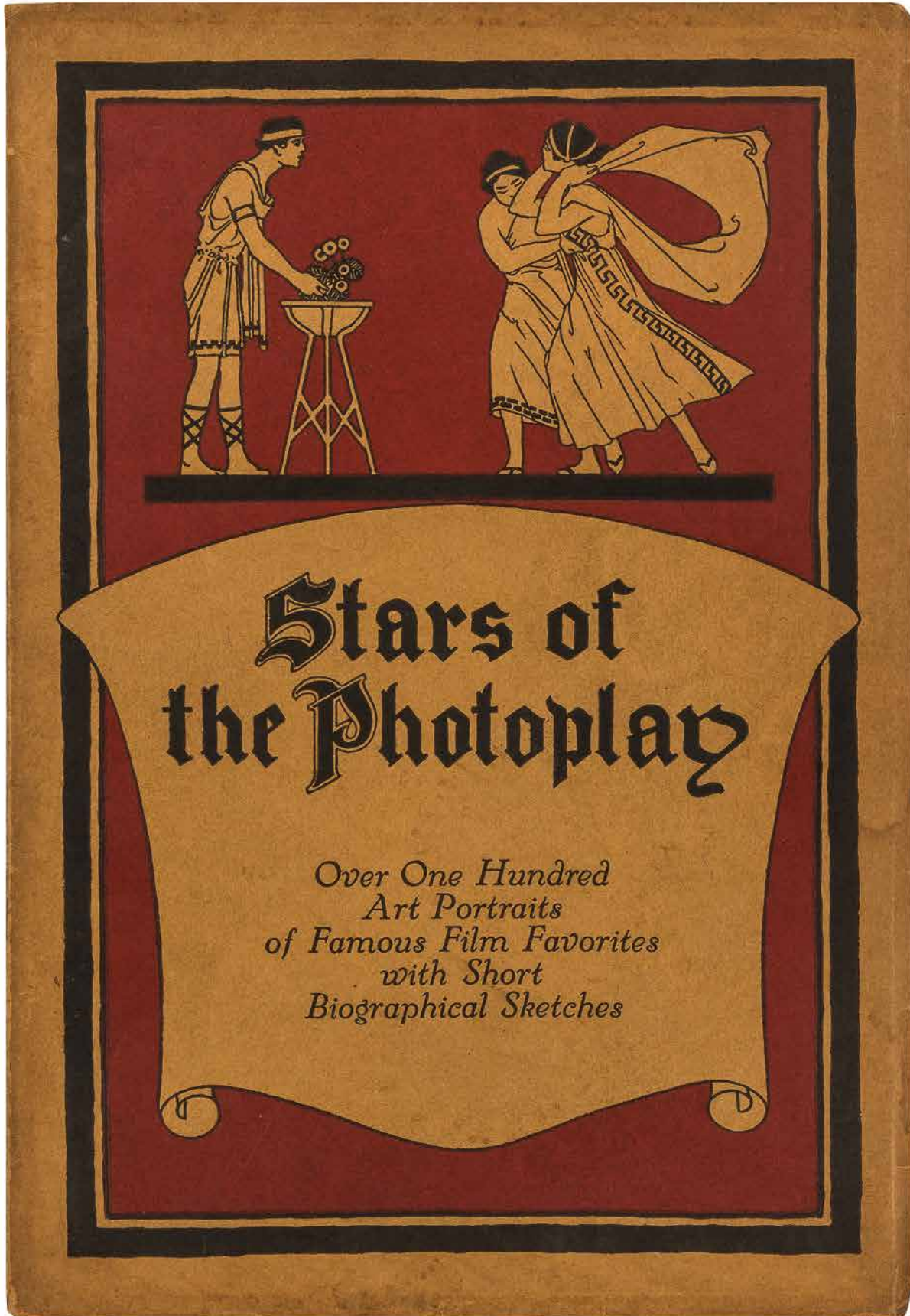


Stars of the Photoplay

Chicago: Photoplay Magazine 1916

\$500

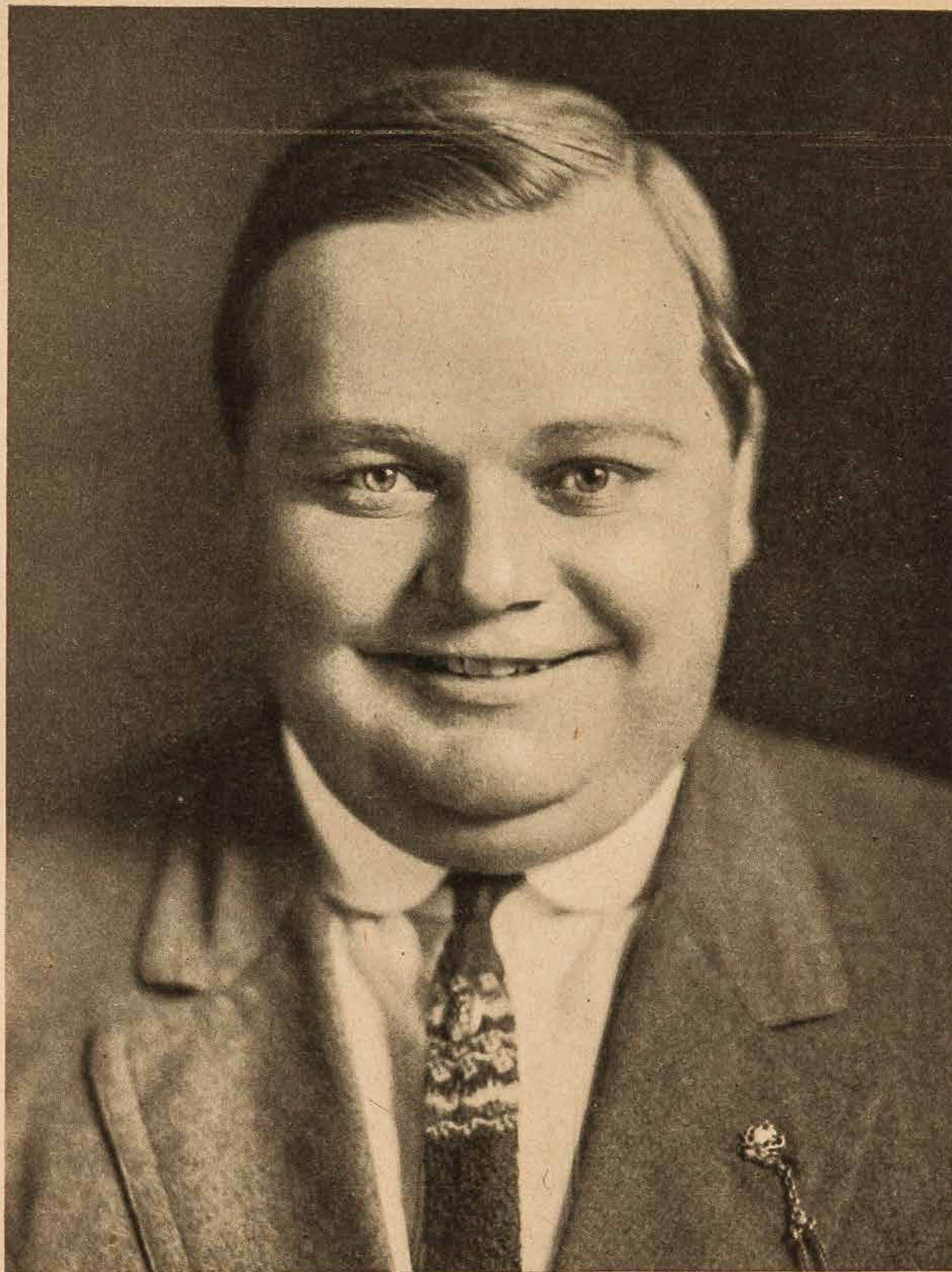


First edition. Small quarto. [108]pp. Illustrated from photographs. Illustrated paper wrappers. Small tear along the paper spine, tiny nick on front fly, very near fine. Over 100 portraits of silent film stars with biographical sketches including Billie Burke, D.W. Griffith, Dorothy Gish, Lillian Gish, Thomas Ince, Norma Talmadge, Mabel Normand, Fatty Arbuckle, William S. Hart, Mae Marsh, Cecil B. De Mille, Pearl White, Douglas Fairbanks, Mary Pickford, Francis X. Bushman, Charlie Chaplin, Theda Bara, and many others. Scarce. [BTC#424823]



DAVID WARK GRIFFITH

is the best-known photoplay director in the world, and by very many is considered the supreme artist among the makers of silent drama. His achievements become colossal when his career is viewed as a pioneer's. He not only has evolved the greatest screen plays of our time, but made the photoplay itself (in its present development) possible. Mr. Griffith is a Kentuckian, is of Southern-Scotch ancestry, and was on the legitimate stage for some years of mild success before his real career commenced.



ROSCOE ARBUCKLE

of Keystone films, is on the comedy side of the Triangle programme, and his two hundred and eighty pounds of rollicking good humor are a mighty asset. Was once a college boy and played football; then a musical comedy star and sang tenor; finally films and fortune. Famous in "Fatty and Mabel" pictures with Mabel Normand. He is married to Minta Durfee, his co-star in many plays.



MARY PICKFORD

is the beloved interpreter of life for the millions who see her every day, and is still affectionately proclaimed "the Queen of the Movies." That is why her salary with the Famous Players is \$100,000 a year. Her sincere, natural art is to the films what Maude Adams has been to the stage. "Little Mary" was born in Toronto 22 years ago. (Belasco once starred her in children's parts.) Her husband is Owen Moore, a leading screen man.