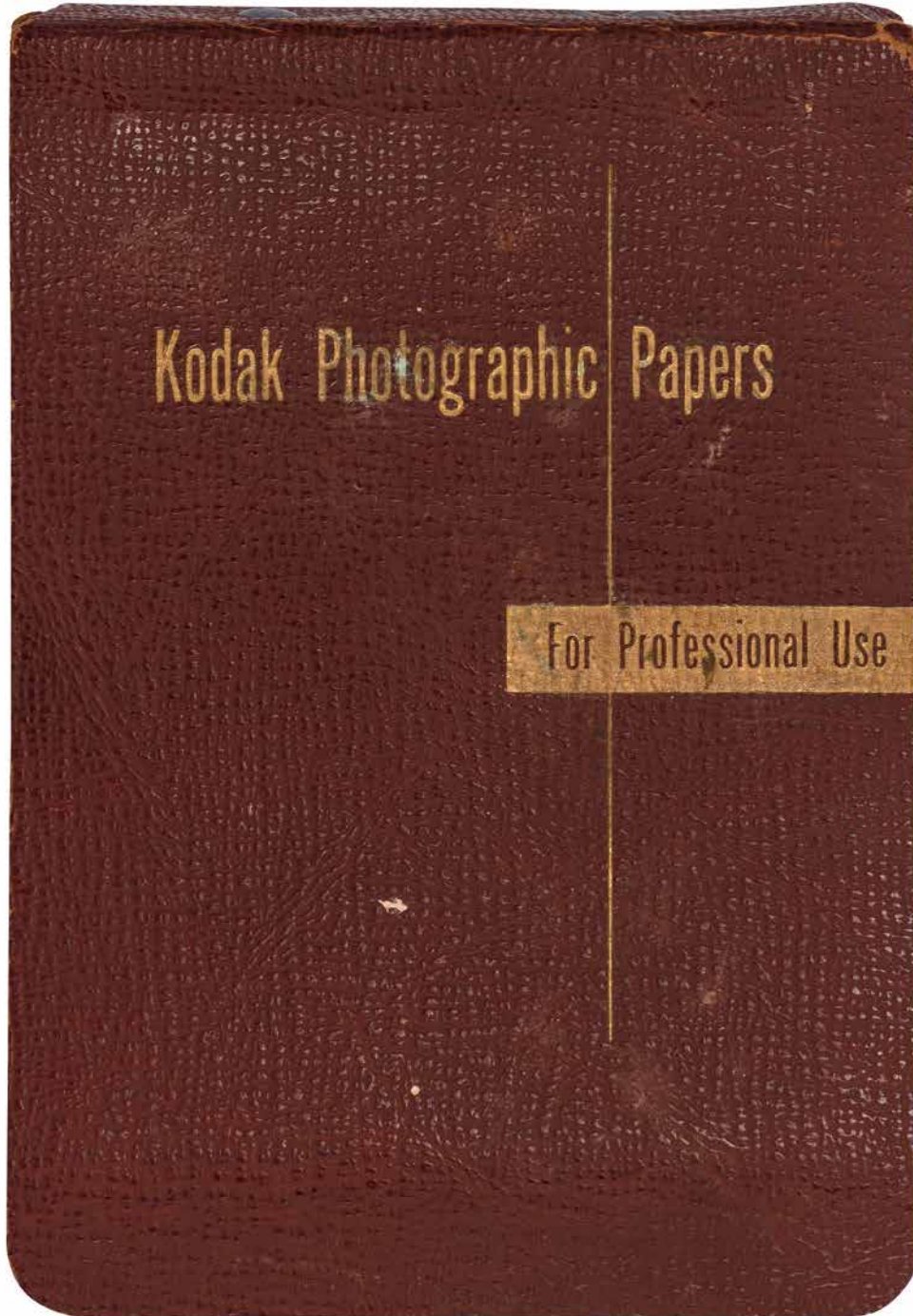




(Cover title): Kodak Photographic Papers for Professional Use

Rochester: Eastman Kodak Company (1953)

\$300



16mo. Approximately 6 $\frac{3}{4}$ " x 5". Spiral bound inserted loose leaf sample book. Flexible leather stamped in gold. Modest rubbing of the leather and very good or better, internally fine. Five pages of prefatory matter followed by approximately 45 photographic paper samples. All images are black and white gelatin silver images on different grades of paper and most feature fashionably dressed women, leavened with a few men, children, and landscapes. A selection of images follow. [BTC#423055]

Kodak Photographic Papers

KODAK CONTACT PAPERS

Kodak Athena Paper is a contact printing paper of portrait quality, producing prints of warmth, brilliance, and fine gradation. It is supplied only in double weight but in four printing grades. Athena tones beautifully to a brown or sepia color in either Kodak Gold Toner T-21 or Kodak Selenium Toner.

Kodak Velox Paper is a fast contact printing paper particularly suited to photofinishing because of its wide latitude and cold blue-black tone. This tone is universal throughout all six printing grades.

Kodak Azo Paper is a widely used contact printing paper for commercial and photofinishing work. Its six printing grades suit negatives of widely differing contrast ranges. Prints made on Azo have a cold tone. For brown tones, Azo can be toned in Kodak Hypo-Alum Toner T-1a or Kodak Brown Toner.

Kodak Illustrators' Azo Paper is a contact printing paper of moderate warmth designed primarily for the requirements of the illustrator and the commercial photographer. Its surfaces are available in both single and double weight and in several printing grades. Illustrators' Azo tones well in Kodak Brown Toner.



Kodak Athena Paper B
Available in DW 1



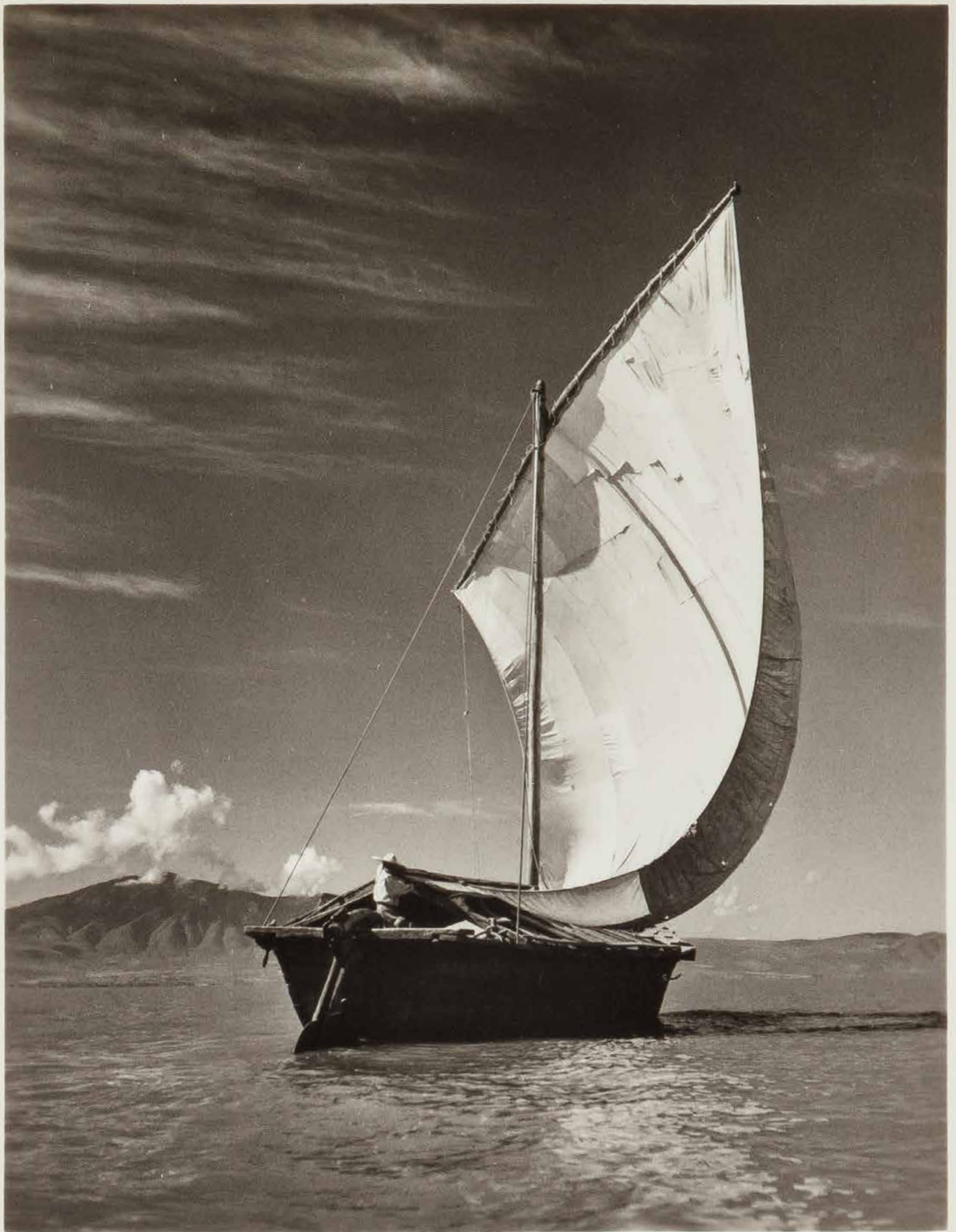
Kodak Velox Paper F
Available in SW 0, 1, 2, 3, 4, 5



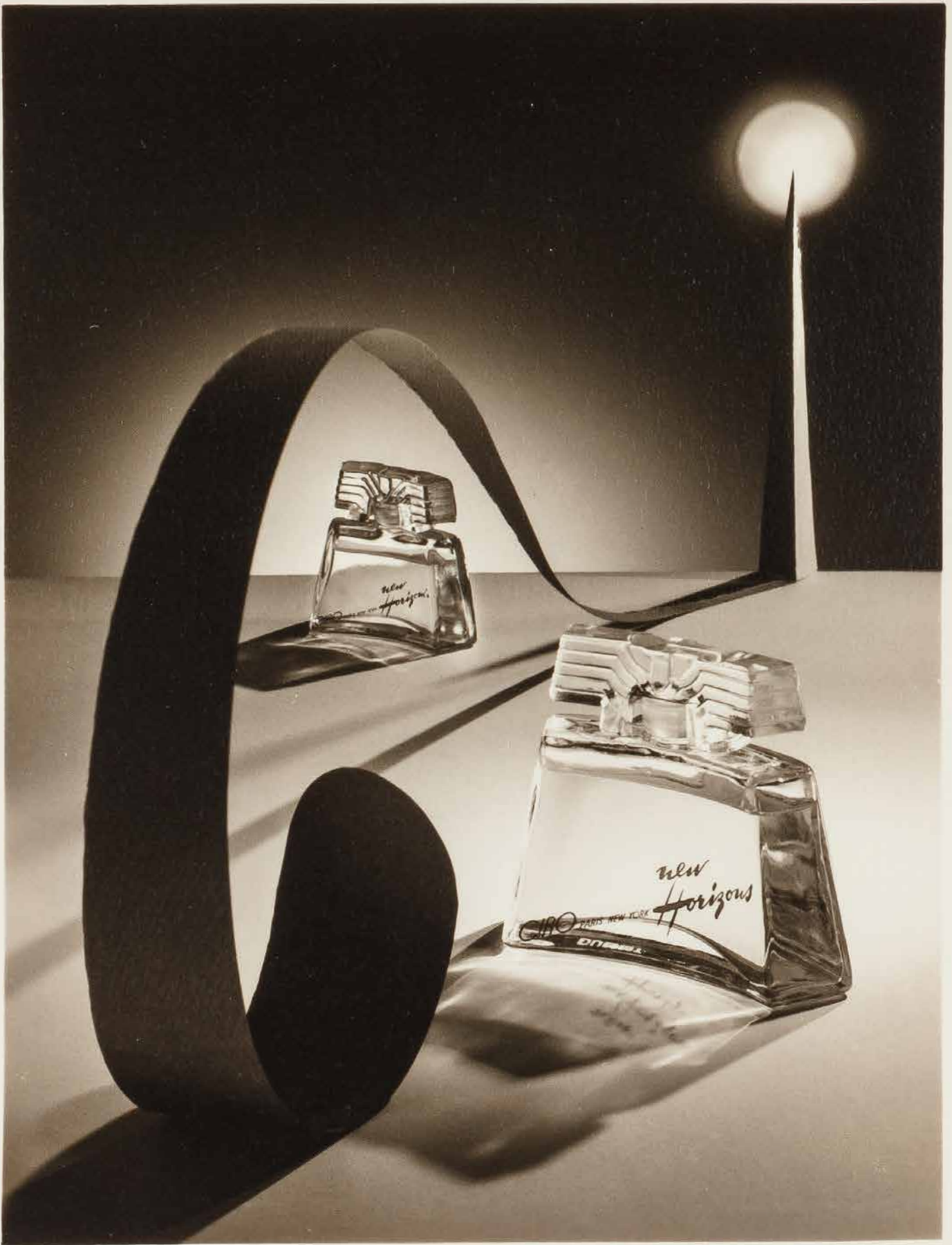
Kodak Opal Paper S



Kodak Ektalure Paper G

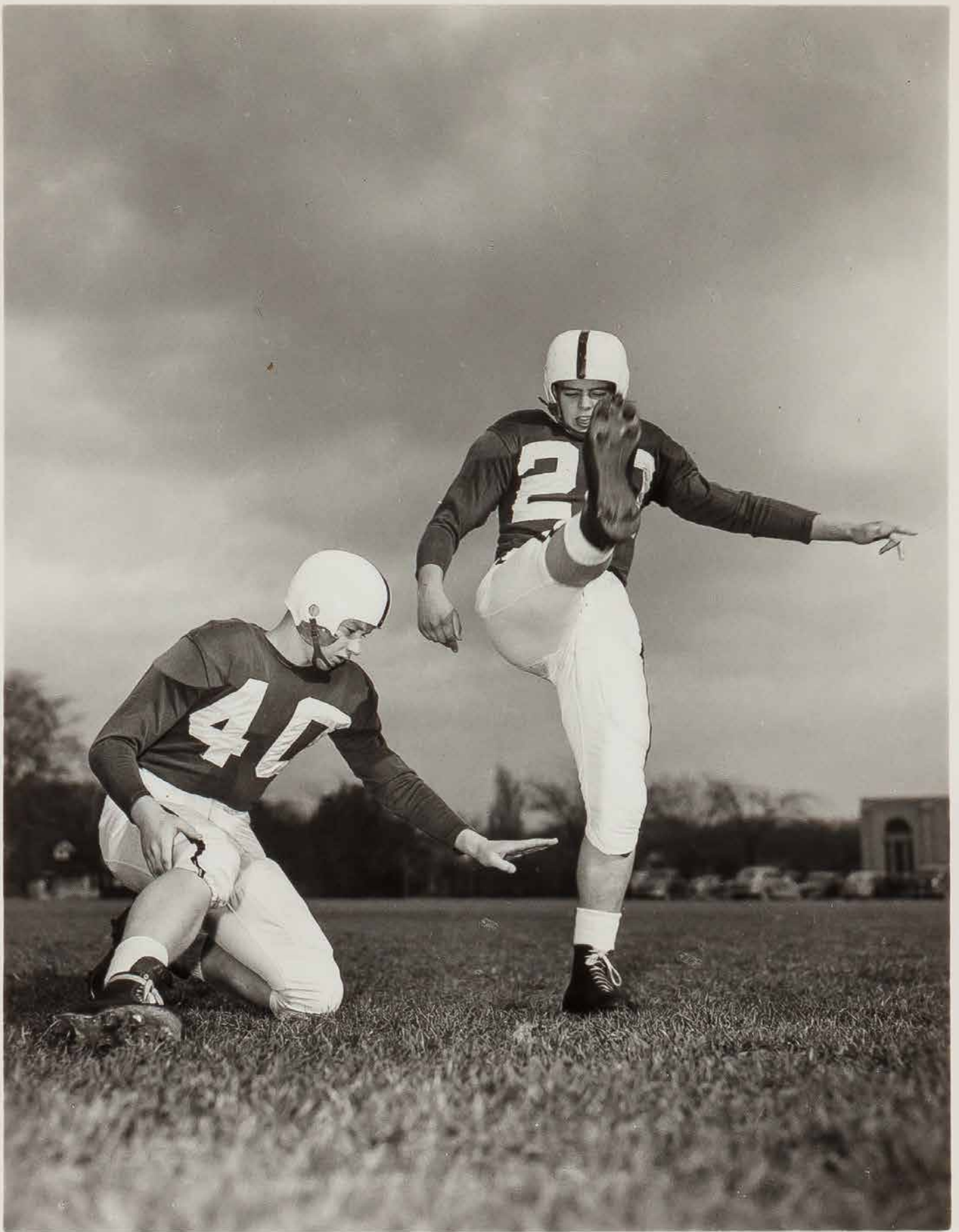


Kodak Medalist Paper E
Available in DW 2, 3



Kodak Illustrators' Special Paper E

Available in SW & DW



Kodabromide Paper F
Available in SW & DW 1, 2, 3, 4, 5