

YALE UNIVERSITY

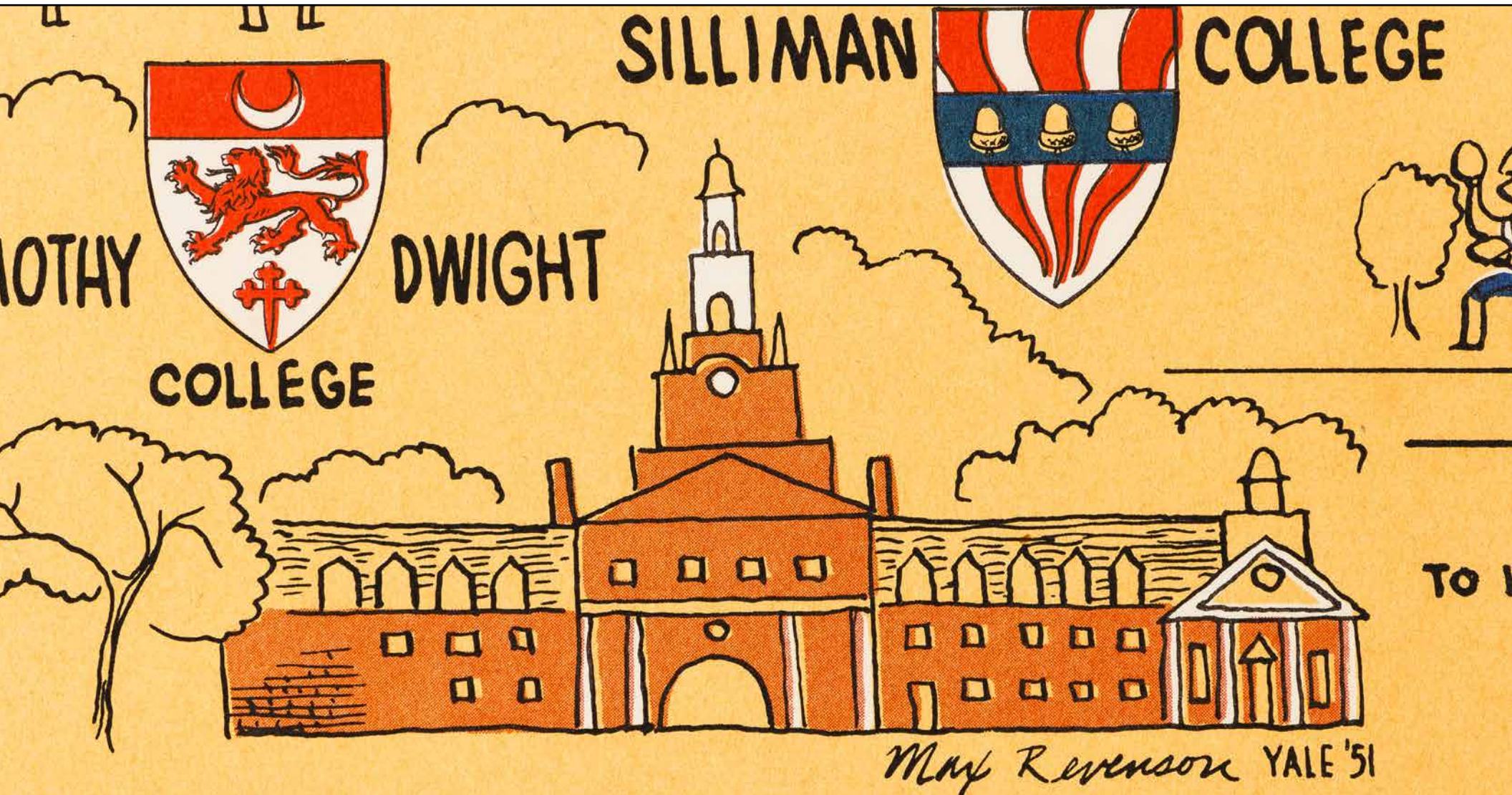
Max Revenson '51

(Broadside map): Yale University

[New York]: College Map Co. [1950]

\$800

First (only?) edition. Illustrated map in color. 25" x 20" (63 x 48cm.). Rolled with a couple of faint and unoffending creases, about fine. A not-to-scale thematic map showing the streets, colleges, buildings, campus attractions, clubs, and hangouts, sports activities, and humorous activities on the campus of Yale University. Date and place of publication from government copyright listings. *OCLC* 793040421 refers to this map as "Map manuscript Archival Material" but appears to give no location. An attractive and pleasingly mildly humorous map that captures the zeitgeist of 1950 campus life and appears to be uncommon. [BTC#420537]



GRADUATE SCHOOL

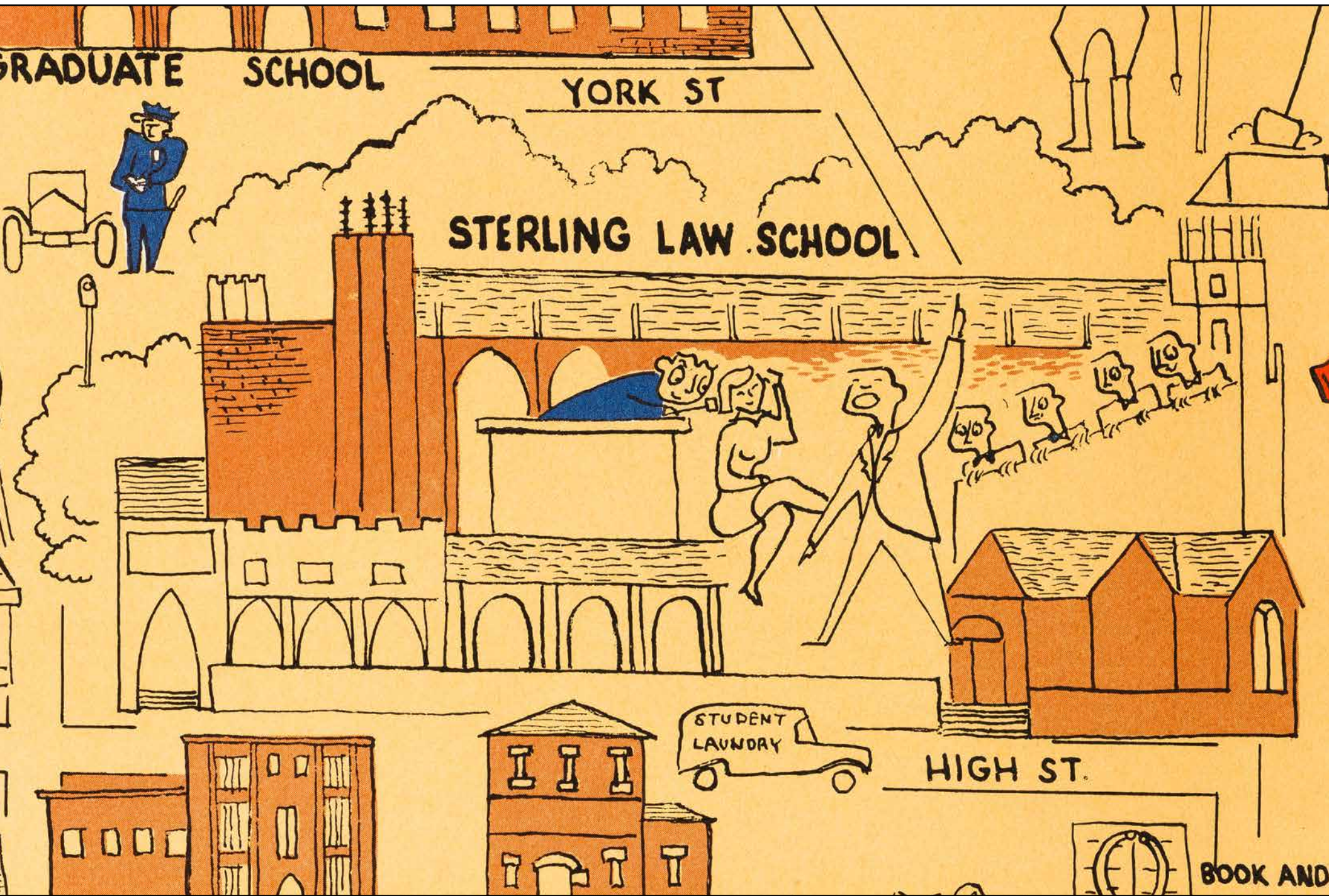
YORK ST

STERLING LAW SCHOOL

HIGH ST.

STUDENT
LAUNDRY

BOOK AND





VANDERBILT HALL

NATHAN HALE
CONNECTICUT HALL

BINGHAM HALL WELCH HALL

PHELPS HALL

LAWRENCE HALL

SHUBERT THEATRE

ANDOVER