



# BETWEEN THE COVERS RARE BOOKS

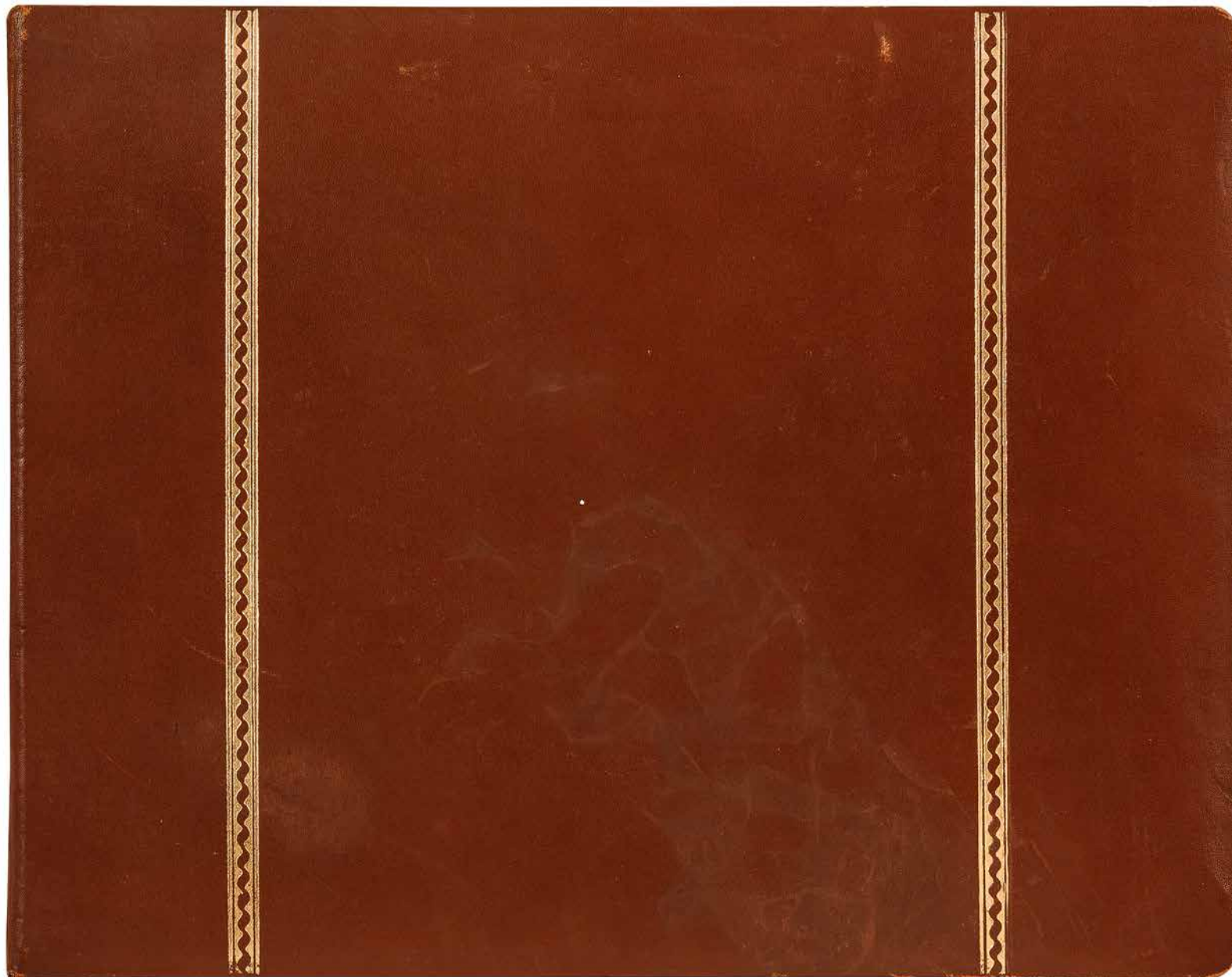
112 Nicholson Rd, Gloucester City, NJ 08030 (856) 456-8008 [betweenthecovers.com](http://betweenthecovers.com)



**(Amelia Earhart, Wilmer Stultz, Anthony Fokker)**

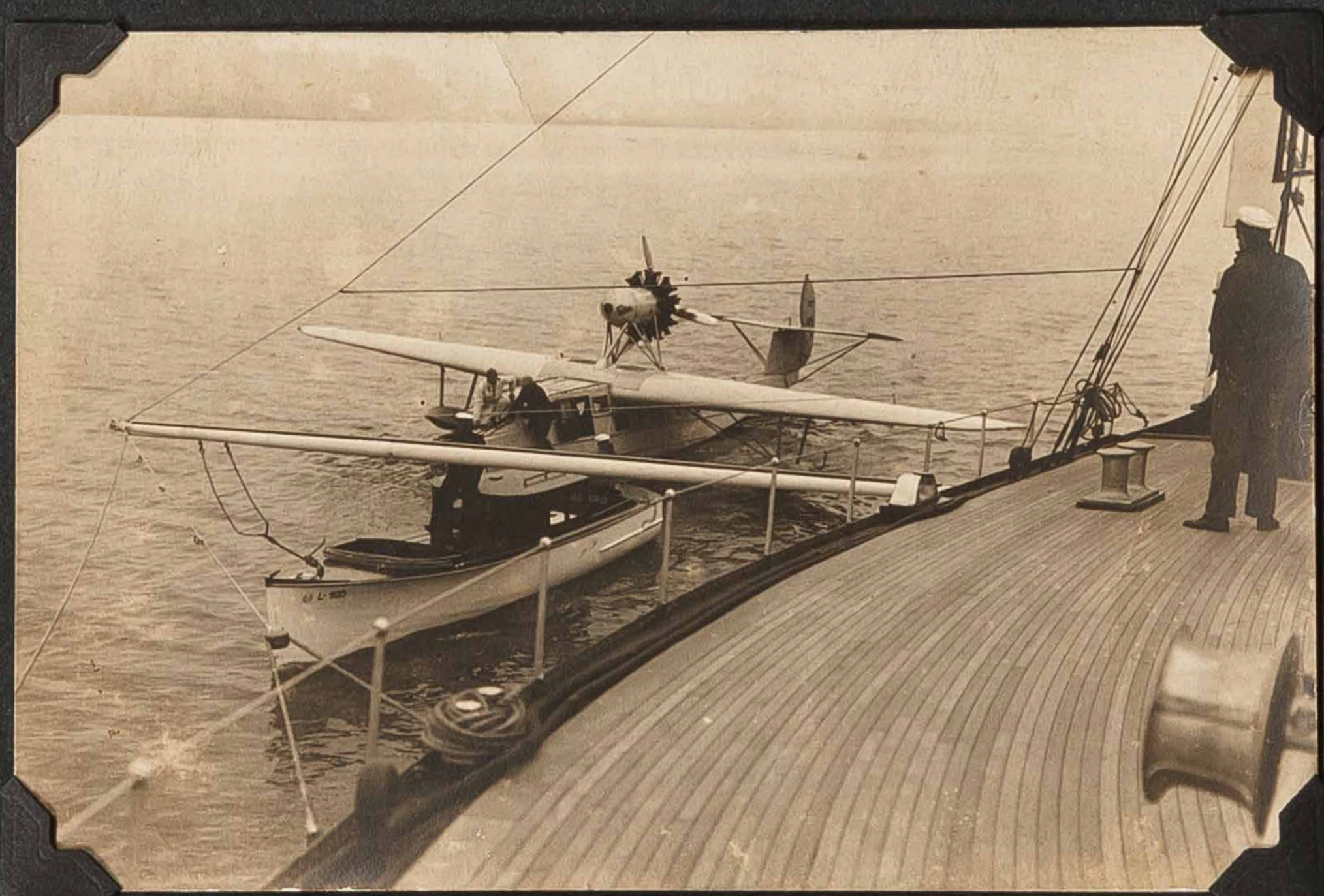
*[Photo Album]: 1920s Aviation*

\$2800



Oblong quarto. Measuring 13¼" x 10½". Screwbound leather board with two decorative gilt stripes. Contains 62 gelatin silver photographs measuring 4½" x 2¾" and 10" x 8". The original album appears to have perished and the photos were placed in this album; the assembler has taken care to photocopy the caption on the back of images and tipped them beside the photos. Near fine with light wear at the edges and light staining to a few internal photographs. An assortment of aviation photographs from the mid-1920s to about 1930. Most notable is a photo of Amelia Earhart with Wilmer "Bill" Stultz, and aviation manufacturer Anthony Fokker, upon their return from a transatlantic flight on Fokker's tri-motor aircraft piloted by Stutz and Louis Gordon in 1928; and two images of Fokker standing by a sea plane and inspecting the prop on an aircraft. Other images show planes in front of the Fair Child Flying Corp. hanger in New York, a pilot posed in front of the Fox Movietone News plane, and 19 photos in and around Rio de Janero in 1929, including shots of Sugar Loaf Mountain, the Fokker Super Universal pontoon plane being towed out of the Guanabara Bay, shots of Rio from the air, as well a four images of the Super Universal in Argentina at an airfield and in the air. An interesting group of fairly earlier aviation photograph featuring a number of important pilot and innovators. A selection of images follows. [BTC#420528]







Court Commercial Photo  
Hempstead, L.I.



Fokker - Amelia Earhardt & Stultz



To Otto  
with best wishes  
Ethel Gordon

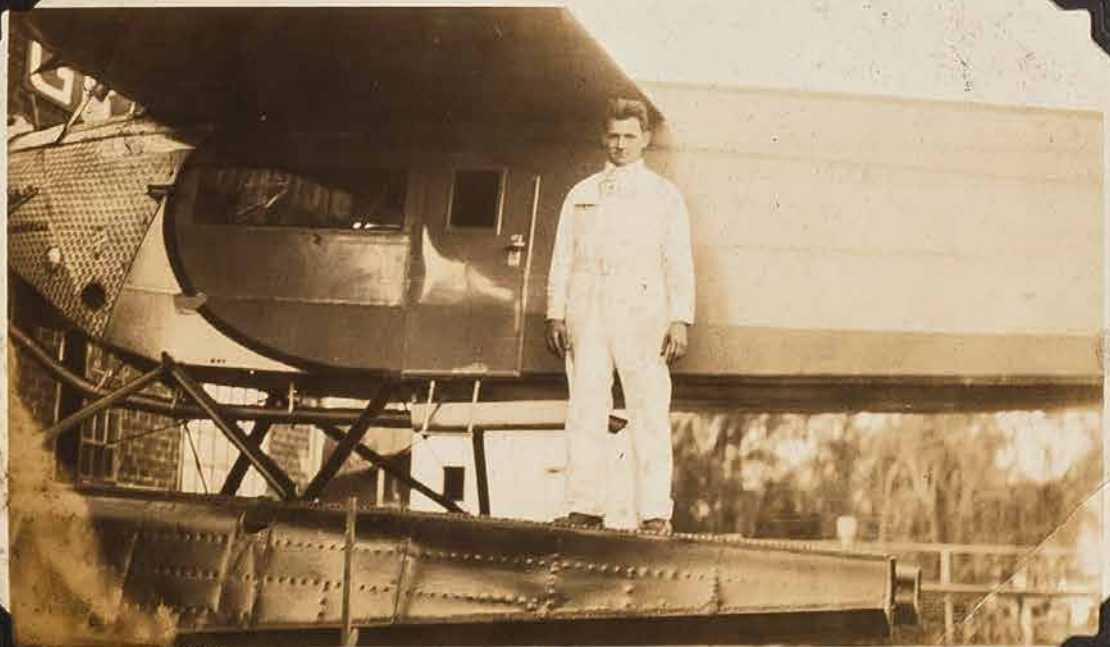
AMELIA EHRHARTS PLANE ON  
RETURN FROM HER FIRST ATLANTIC  
FLIGHT. LEW GORDON WAS COPILOT  
& MECHANIC



Front of Hotel Gloria  
note trees Rio June 27, 1929



Taken from my room at  
Hotel Gloria Rio note  
trees and sugar loaf mountain  
June 27, 1929



NICHERDY BRAZIL ACROSS THE BAY FROM  
RID TAKEN FROM PLANE RID BRAZIL  
JULY 26, 1929.



SUGAR LOAF MOUNTAIN 1400 FEET HIGH  
AT THE GATE TO RIO RIO BRAZIL JULY 26, 29  
TAKEN FROM PLANE NOTE WING



PLANE AT ISLAND OTTO ON PONTON  
NOTE PRIVATE YACHT ALSO PATCH  
WHERE HOLE HAD BEEN CUT  
RIO BRAZIL JULY 27, 29





Taken at maron field.  
Left to right myself. Ottiker  
and Smith the chief mech.  
we were not discussing motors

Lew.

Ground Flash  
before attempted  
flight to Rome



Fokker inspecting  
Prop.