

[Loose Photographs]: Cabinet Cards of Nurses

Philadelphia: 1880-1890

\$750



A collection of 6 mounted sepia-toned cabinet cards depicting nurses in Philadelphia between 1880 and 1890. Each photograph features the stamp or logo of a Philadelphia area photography studio including Phillips on Chestnut Street, P. Elehillman on Arch Street, The Gilbert Studios on Chestnut Street, and Kehrwieder's Studio in Germantown.

All but two photographs are identified with the nurse's name on the verso these include Catherine Taylor, Helen Whitaker, Mrs. Lee Brooks and Alma Wrigley. Most of which are Pennsylvania General Hospital graduates, known at the time as "Old Blockley." All of the women are photographed in their uniforms, some are holding implements of their trade including a towel and medicine bottle. One of the women, Catherine Taylor, is seen wearing a double frill hat with her uniform, a feature of the uniform worn at Pennsylvania General Hospital, and the verso of the photo reads, "Miss Taylor '89 Orthopedic." Alma Wrigley went on to become an army nurse during World War I at the base hospital at Camp Lee, Virginia.

A modest but interesting collection of early nursing graduates in Philadelphia. [\[BTC#420165\]](#)



Kuebler

1210 CHESTNUT ST.
PHILADA



Phillips



Philadelphia.



P. E. Chillman

914 ARCH ST.,
PHILAD'A.



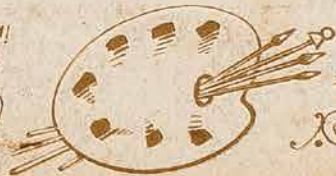
The *Gilbert*
Studios



926 Chestnut St.
Philadelphia.



KEHRWIEDER'S
STUDIO



4905 MAIN ST. ©
GERMANTOWN.



Phillips



Philadelphia.