

# BETWEEN THE COVERS RARE BOOKS

112 Nicholson Rd, Gloucester City, NJ 08030 (856) 456-8008 [betweenthecovers.com](http://betweenthecovers.com)

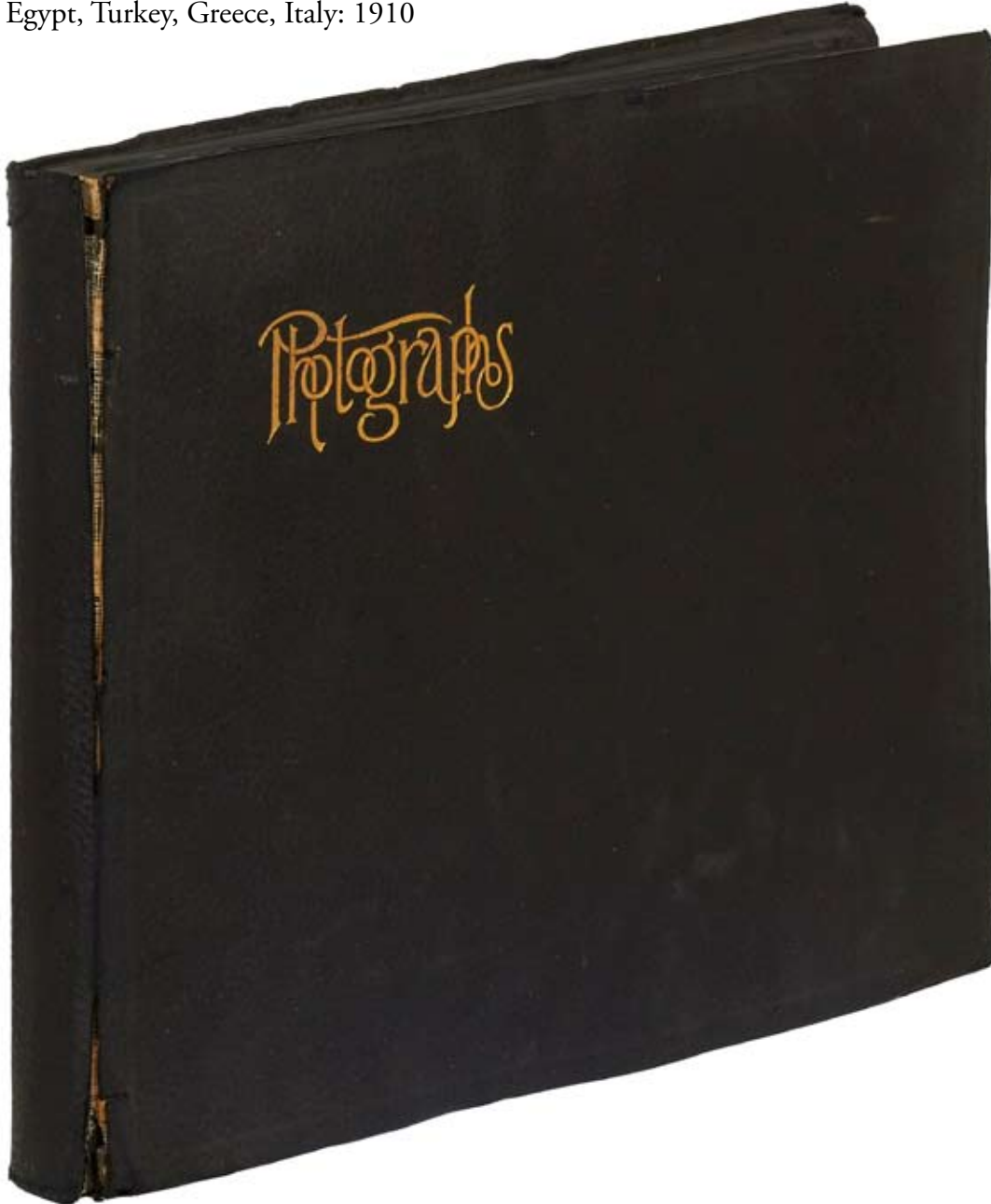
---

## Howard Crosby Butler

*[Photo Album]: Mediterranean Boat Journey and Archeological Dig*

Egypt, Turkey, Greece, Italy: 1910

\$1800



Oblong folio. Black leather over paper boards with "photographs" stamped in gilt on the front cover, measuring 11" x 13". An assortment of 255 sepia toned photographs affixed to stiff black paper measuring approximately 3" x 5" to 6" x 8". A few photographs are lacking and there are tears on the spine thus very good with near fine photographs.

Assembled collection of photographs chronicling the travels of a group of people around Europe and its surrounding areas before arriving at an archeological dig in Turkey during 1910 led by Princeton University professor, Howard Crosby Butler. The beginning of the album shows crew members posing about the boat, in and out of uniform, including serving girls, the chef, the captain, and various officers. They stopped at numerous Mediterranean ports beginning with Gibraltar, its famous limestone mass seen here from the boat deck. The company toured Egypt on camel back with photos of the sphinx and the great pyramids seen here as well as the ancient structures of Greece's Parthenon and the Roman Coliseum.



The second half of the album documents the company aiding in an archeological dig in Turkey with Turkish locals as well as American men in fedoras or pith helmets overseeing the work and laying down rails to move equipment. One photo of a man on a rock waving his helmet above his head is almost certainly Princeton University archeologist, Howard Crosby Butler. Butler was hired by the Turkish government to aid in the find at ancient Sardis, one of the most important cities of the Persian Empire. Photos of two pillars on a hillside reveal that one of the sights is the unearthing of the Temple of Artemis which began in 1910 and was the first large scale dig at the sight. "The site of the Sardis civilization--older than the Syrian--were much deeper than previous digs. Butler was able to successfully excavate these ruins between 1910 and 1922." The photos show individual portraits of the men on the dig posing with equipment, local children and animals, and numerous shots of the dig sight.

A wonderful album depicting turn of the century Mediterranean discovery.  
[BTC#393267]

























