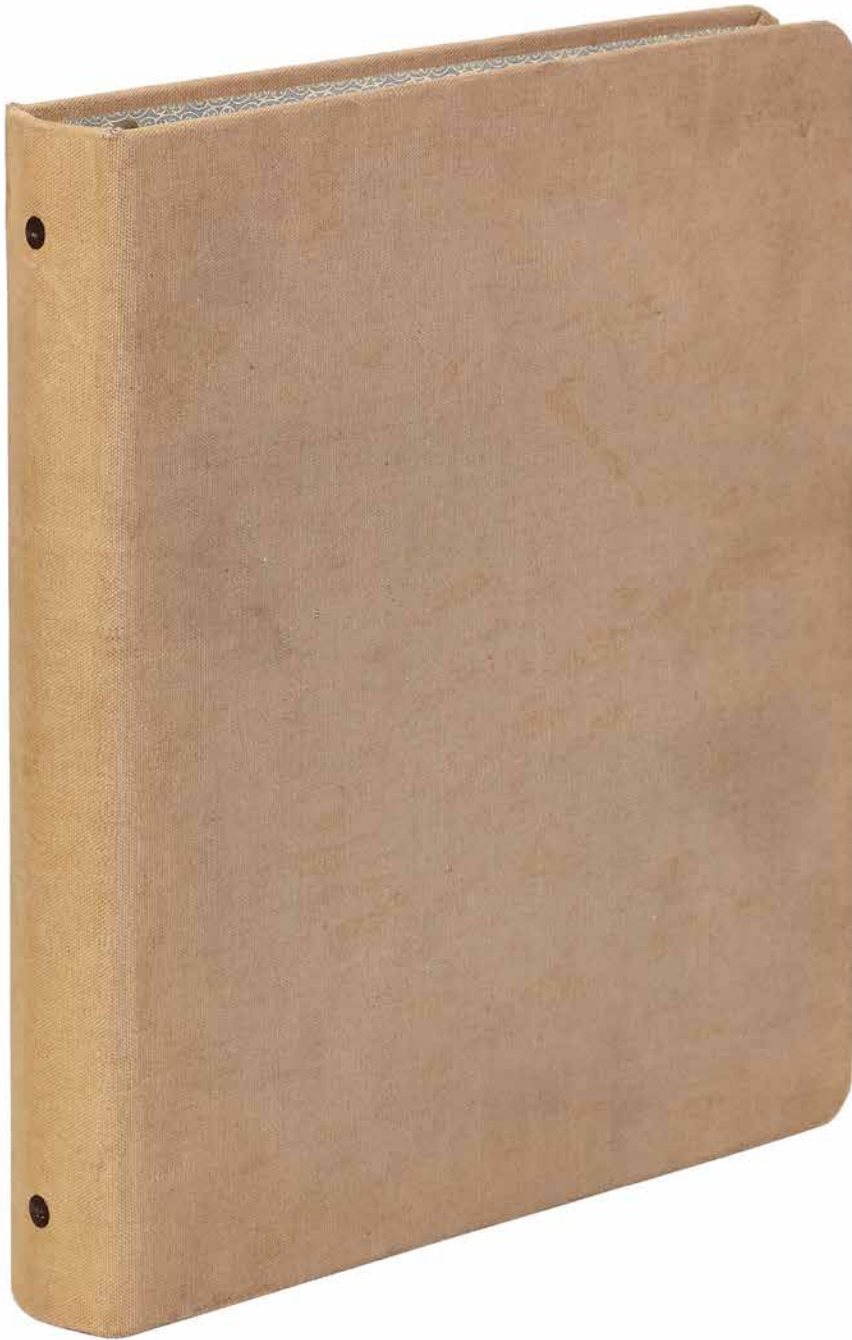


## Sherwin Carlquist

*[Photo Album]: Several Botany Trips by the Harvard Botany Club [hand-lettered title page]: "Photographs Volume II. Summer 1954 concluded to [1955]"*

1954-1955

\$1500



Three-ring bound loose leaf binder. 153 mounted black-and-white photographs, most approximately 3½" x 5", mostly fine, with a small group (perhaps ten or fewer) of commercial images of park locations. Virtually all are captioned. Internal evidence seems to indicate that American botanist, author, and photographer Sherwin Carlquist (recipient of the 1993 Asa Gray Award) was most likely the compiler of this album. The first sections consists of well-composed images of a botany trip in the West, primarily in California (Morro Bay, Carmel, Bolinas Bay, Lagunitas), Oregon (Pistol River, Brandon, Harris Beach State Park, and many other locations), and Washington (Pacific Beach, Olympia National Forest, Sekiu, Kalalock Beach, Friday Harbor). These are followed by images of trips to Long Island (only a few images), followed by images of several trips with the Harvard Botany Club to Mt. Washington (several trips), Plum Island, Horn Pond Mt., and a trip to Illinois.

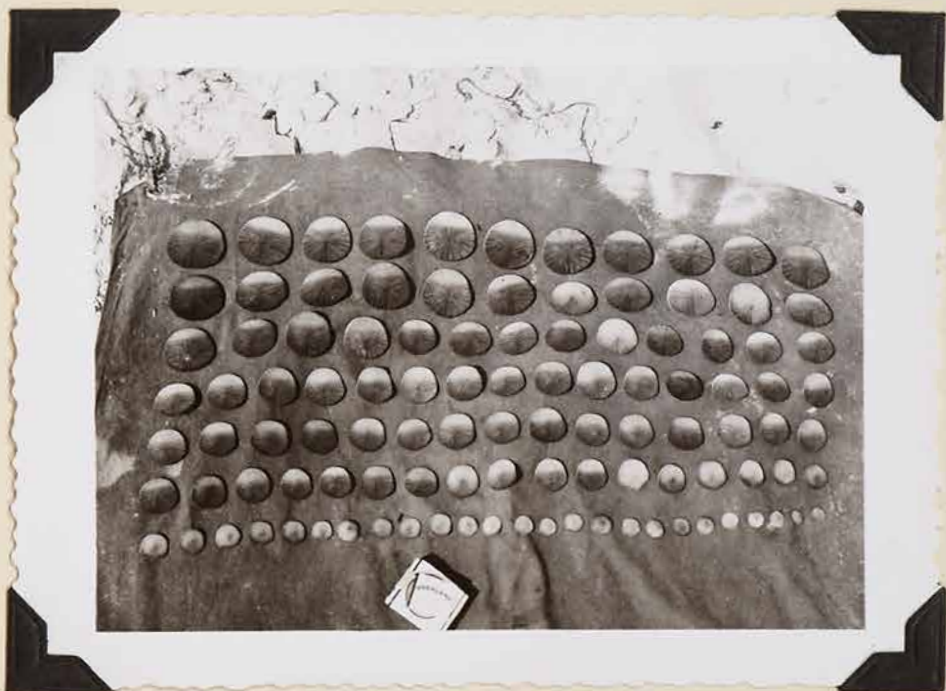
With few exceptions the images are devoted largely to Botany and geology. The later Harvard Botany Club's trips are well-captioned and identify several participants notable in scientific (not surprisingly botany) circles such as Robert Dressler and A.Q. Dickson. Curiously we have found mention of a second volume that was sold on Ebay (it annoys us mightily that they have been separated), but this is as we found it, and is at least interesting and can clearly stand alone. A selection of images follows.

[BTC#390200]

Western Trip, continued



Dendroster and seaweed on the beach -  
Silver Strand State Park, San Diego, Cal.



Collection 9A drying on the tarp - Mission Bay, Cal.

Plum Island, concluded.



John Beaman explains  
salt marsh peat

and Taylor Steevens explains  
about a lichen on a twig



Miscellaneous - Spring 1955

Bill Drury explains  
the Concord Great Meadows  
to McCagg and the  
rest of Nat. Sci. 6



Roland Davis fixes the  
Hamburgers for  
the lab. picnic

The Botany Club's spring photo by Frank White



Top Row:

1.  
2.  
3.

4. Roland Davis  
5. Rink Barkley  
6. Ed Samuels

7. A.R. Dickson  
8. Dix Sampson  
9. Jack Paxon  
10. Colette Nitsch  
11. Jean Nitsch

Middle Row:

1. Margie Bryan  
2. Barbara Donghue  
3. Terry Marsden Ray

4. Ann Morrill (Briggs)  
5. Peg Wolfe

Bottom Row:

1. Pete Ray  
2. Jack Fraeburg  
3. Don Whitehead

4. Phil Snider  
5. Jim Hay  
6. Cris Martin

Mt. Washington, concluded



Part of the gang in the Alpine Gardens

A. Q. Dickson  
Pete Ray  
Lynn  
Bob Dressler

Terry Ray  
Margie Bryan  
Bill Drury  
Don Whithead



About to start up the fire trail in Tuckerman's Ravine:

Sherwin Carlquist  
Helen Johnson  
Ellie Whitehead  
John Beaman

Bob Dressler  
Dr. Hu  
Mary Krothow  
Marg Cornet



Across the Cutler River on the fire trail in Tuckerman's Ravine

Ellie Whitehead  
Mary Krothow  
Marg Cornet  
Ed Samuels