



Sol Hodes

[Photographs]: "Photographic Sketches by Sol Hodes"

[Los Angeles: Solomon Hodes circa 1929 - 1930] \$3200

Modern portfolio, with 30 loosely inserted mounted images and a mounted hand-lettered title page ("Photographic Sketches by Hodes"). Affixed to the title page is the cover of a small photographic periodical, *The Developer of the Los Angeles Camera Club*, dated in 1928, with a clipping, presumably from this issue, mentioning Hodes in an account of a photography expedition of the Club to Malibu Lake. The images vary in size, but are all relatively large, most being approximately 7½" x 9½". Most are captioned below the image, a couple are captioned within the image. The images show a fair amount of talent, and the subjects are various: bewitching costumed or semi-costumed women, bucolic landscapes, prosaic studies of gnarled older gentlemen, buildings and cityscapes, etc. All are very much of the period. We can find little about Hodes, beyond the bare mention of his existence and that he was born in Russia in 1880 and immigrated to the U.S. around 1916.

A complete list follows after a selection of images.



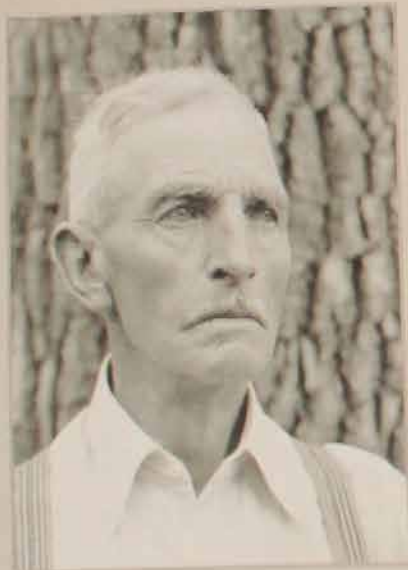
1950



1951



1952



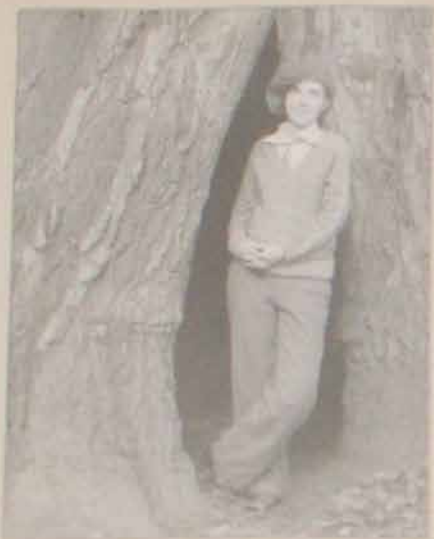
1953



1954



1955



1930-1931



1930-1931



1930-1931



1930-1931



1930-1931

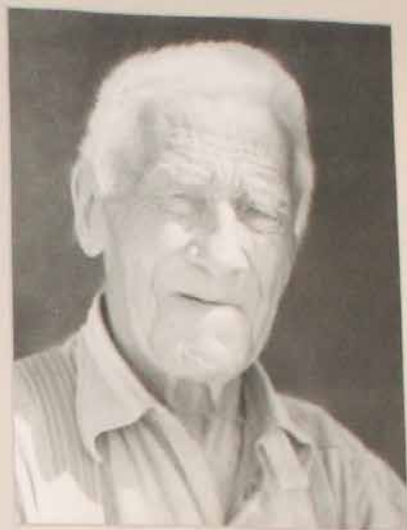




1950-1951



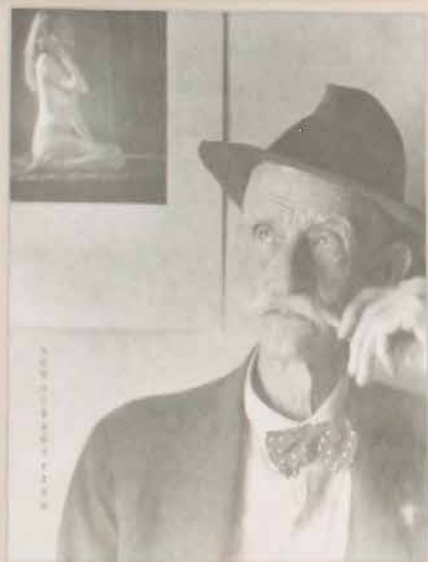
1950-1951



1950-1951



1950-1951



1950-1951



1950-1951





Miss [Name]



St. [Name]



Miss [Name]



Miss [Name]



[Name]



Miss [Name]

The Developer

of the

Los Angeles Camera Club

Member Associated Camera Clubs of America

108 Stimson Building 129 West Third Street

Vol. I

MAY 1928

No. 4

The expedition to Malibu Lake on April 15th was one of the most successful and thoroughly enjoyed outings ever made by the Club. The rugged mountains, beautiful lake and picturesque rocks afforded unlimited opportunities for picture making, and the large pavilion with its clean tables and comfortable seats was appreciated by all at luncheon time. Mr. A. Nielen with Miss Dora M. Hartkemeier, Miss Margaret Carson and Mr. R. Baily Carson as his guests drove home over the new mountain road to the ocean. Later another party comprising Mr. C. N. Fuller, Mr. Sol Hodes, Mr. R. L. van Oosting, Mr. Milton Inman, Miss Angela Bartos, Miss Madeleine Riechaelu, Miss Petra Graven, Miss Thelma Slocomb, Miss Rita Beck and Miss Laura Slocomb elected to return by the same route and stopped for dinner in Santa Monica Canyon.

Laura Slocomb.

Voigtlander Avus 6½ x 9 cm. with F4.5 lens
in Compur Shutter, 3 Plate Holders and
Adapter - only \$33.00

Voigtlander Avus 9 x 12, with F4.5 lens in
Compur Shutter, 3 Plate Holders and Adapter,
only \$39.00

3A Roll Film Camera with F6.3 Anastigmat
lens in Ilex Shutter, new, \$22.50

Little Sunny Ares \$15.00

Peterson's Camera Exchange

321 O. T. Johnson Building

356 So. Broadway

Los Angeles, Calif.

Lowest Prices ever

—on—

Enameled Steel Trays

1. "20th Century Sphinx" 7¾" x 9½"
2. "Crown of Glory" 7¼" x 9½"
3. "It's Snowing" 7½" x 9½"
4. "My fo..." [caption torn] 7½" x 9¼"
5. "Dawn of Adolescence" 9½" x 7¼"
6. "Sweet Sixteen" 7½" x 9½"
7. "Artists on Location" 9½" x 7¼"
8. "FALL" 7¼" x 9¼"
9. "VESPER" 7¼" x 9¼"
10. "SPRING" 7¼" x 9½"
11. "Three Musketeers (Adventure Bound)" 7¼" x 9½"
12. "Still Life (Carolers)" 9½" x 7¼"
13. "REPENTANT" 7½" x 9½"
14. "RETROSPECTION" 7¼" x 9¼"
15. "Slave Girl" 7¼" x 9¼"
16. "CAUTION" 7½" x 9½"
17. "Joie de Vivere" 7½" x 9½"
18. "Longevity (5 score years and ten)" 7¼" x 9½"
19. "Grass Shadows" 9½" x 7½"
20. "Hiker at Rest" 7½" x 9½"
21. "The hollow Tree" 7¼" x 9½"
22. "CIRCE" 7¼" x 9"
23. "Skeleton" 7¼" x 9½"
24. "Symphony in JUNK" 7½" x 9½"
25. "REFUGEE" 7¼" x 9"
26. "Ruggedness" 7¼" x 9¼"
27. "City Chore" 7¼" x 9¼"
28. "Day-Dreams" 9¼" x 7½"
29. "NORMANDY" 9½" x 7½"
30. "Reflected Beauty" 9¼" x 7¼" [BTC#304924]

